



language
in action

JUNIOR PROGRAMMES

Junior PROGRAMMES

Summer 2023

LEARN, HAVE FUN, DREAM BIG





KEY STRENGTHS Why Language in Action UK


Hello!



Language in Action helps you to **use your newly learnt English language skills** in real life English situations.



Enjoy the city in which you are studying by taking full advantage of our central locations. **Our programmes include daily excursions.**



Language in Action **Staff have expertise** in delivering **short courses to groups.**



We offer flexibility. **Our schedules are tailor-made** by staff with a background in education, art history and tourism.

With **OVER 60 EXCURSIONS** to choose from, there is something for everyone.



“Our teacher is perfect, and helps us to improve ourselves and speak beautiful English.”

FLAVIO, ITALY

SCAN THE QR CODE FOR MORE TESTIMONIALS



METHODOLOGY

Language in Action is all about making connections.

Connections between cultures.

Connections between classroom learning and real-life experience.

Our programme of activity and academic syllabus are closely connected to ensure that students gain confidence and really immerse themselves in learning.

We focus on three key elements:

British Culture

Real-life Skills

Speaking Confidence



BRITISH CULTURE

We bring culture into the classroom.

Students apply English learning to the cultural experiences in the city.



REAL-LIFE SKILLS

Our classroom syllabi is closely paired with excursions and activities.

Our students are encouraged to practice in real-life situations because we believe that students learn better using their language in action.

SPEAKING CONFIDENCE

Tuition is focused on improving verbal communication.

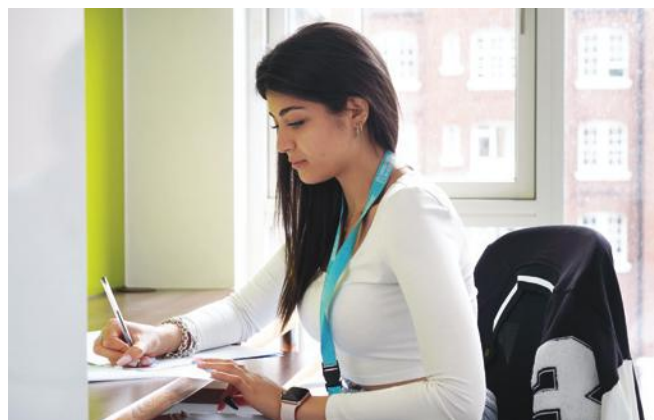
With the support of our trained teachers, students will gain confidence and make lots of progress, even on short courses.

GARDEN HALLS CENTRE

ZONE 1, LONDON, BLOOMSBURY
1 CARTWRIGHT GARDENS
SAINT PANCRAS, LONDON, WC1H 9EN

Garden Halls is a **PREMIUM COLLEGE** with all services conveniently located within the same building. Situated in Bloomsbury, one of London's most prestigious and sophisticated areas, this facility is designed to impress.

AVAILABLE FOR INDIVIDUALS



STUDENT ACCOMMODATION THAT FEELS LIKE YOU'RE STAYING IN A 4-STAR HOTEL

This full-board accommodation includes a double bed with private bathroom and large shower. A wardrobe, chest of drawers, desk and chair.

The complex provides:

- 24-hour security
- Shared kitchen & canteen with daily buffet
- Cinema room, music & games rooms
- Landscaped gardens



YOUR DOORWAY TO EUROPE

With accommodation this lovely, you might not want to leave. However, if you do venture outside, you are amazingly well located to explore London, and Europe!

From St Pancras International Station (located very close to this accommodation), you are only 2 hours from Paris.

If you would prefer to stay in London, the British Museum is just 8 minutes walk away, and as you are located close to underground stations, all of London's attractions are less than 10 minutes away.

TOP-RATED Premium Centre



KEY INFO

-  Age: 12 - 19 years for groups, 14 - 19 years for individual students
-  Class size: maximum 18 students
-  Room Type: Single-person en-suite
-  Board Type: Full Board on-site
-  Hours per week: 15 hours tuition
-  Three packages available
-  CEFR Levels: A1 - C1
-  LanguageCert Exam option available on-site
-  Location has 24 hour security
-  International classes also available at Malvern House London (13 min walk) for 16+ students



WIDE RANGE OF TUITION OPTIONS

MAKE THE MOST OF YOUR LANGUAGE STAY

with additional classes designed to enrich your knowledge of the language and prepare you for your English language assessments.

Add-ons include:

- IELTS Preparation Classes
- Cambridge Preparation Classes
- Intensive English language Classes
- Business English Classes
- A LanguageCert exam (can be taken on-site with a minimum of 8 participants)

2023 START DATES

Turn 1: June 22nd to July 6th

Turn 2: July 6th to July 20th

Turn 3: July 20th to August 3rd

Turn 4: August 3rd to August 17th



PARRY HALL CENTRE

ZONE 1, LONDON

19-26 CARTWRIGHT GARDENS, KINGS CROSS, LONDON, WC1H 9EF

**BEST
SELLER**

Parry Hall is a popular student accommodation for students studying at the University of London.

Alongside Garden Halls, this centre accommodates Young Learners (from 12+ years).



A BUDGET-FRIENDLY CHANCE TO STAY & STUDY IN ZONE 1

This centre offers high-quality full-board accommodation at an affordable price.

This accommodation includes:

- Single en-suite rooms (with toilet and sink)
- Shared shower rooms (1:2 ratio)
- Rooms have a workstation, wardrobe and storage space
- Bed linen and towels
- Weekly cleaning of rooms and common areas
- On-site laundry facilities
- Wi-Fi included

The complex provides:

- Shared kitchens
- Communal spaces to socialise, study and relax

THE BEST FOR LONDON EXPLORERS

Parry Hall is **A SAFE CHOICE** even for younger students, with 24-hour security staff, gates at the entrance and all the services inside the campus. It also offers **A GREAT CHANCE TO EXPLORE**. It is 10 minutes walk from Central London's **TOP ATTRACTIONS**.

A WIDE RANGE OF DAILY FOOD BUFFET OPTIONS ON-SITE

All meals are served on-site at the same canteen as Garden Halls, including a wide range of international breakfast foods.

Packed meals are available for excursion days.

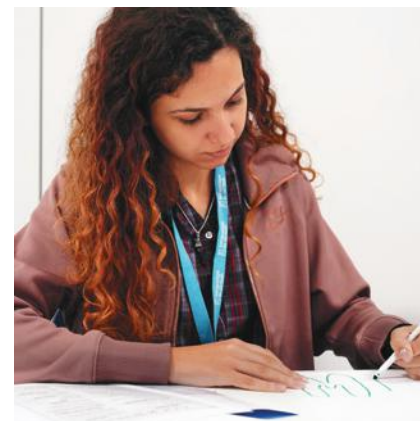
The menu includes a **WIDE RANGE OF FOOD CHOICES** and takes into account special dietary needs of students.

VARIED STUDY OPTIONS

The study packages at this centre include a base-level of 15 hours tuition per week and there is the option to add-on additional study to further enrich your experience.

Options include:

- IELTS Preparation
- Cambridge Preparation
- Business English
- Intensive English





**AVAILABLE
FOR
INDIVIDUALS**

KEY INFO

 Age: 12 - 19 years for groups, 14-19 years for individual students

 Class size: maximum 18 students

 Room Type: Single-person en-suite (with 1 shared shower for every two bedrooms)

 Board Type: Full Board on-site


 Hours per week: 15 hours tuition

 Three packages available

 CEFR Levels: A1 - C1

 LanguageCert Exam option available on-site

 Location has 24 hour security

 International classes also available at Malvern House London (13 min walk) for 16+ students

2023 START DATES

Turn 1: June 22nd to July 6th

Turn 2: July 6th to July 20th

Turn 3: July 20th to August 3rd

Turn 4: August 3rd to August 17th

WEMBLEY CAMPUS

CITY CENTRE, CENTRAL WEMBLEY

Located in the heart of the Sports Park and very close to Wembley Stadium, our Wembley Campus has everything you could ask for in a study holiday destination. Not only is there easy access to the stadium, but it is close to London Designer Outlet, King Edward VII Park and a tube ride away from Central London. Wembley Campus uses the modern facilities at the prestigious College of North West London giving you a well-rounded study holiday experience.

KEY INFO

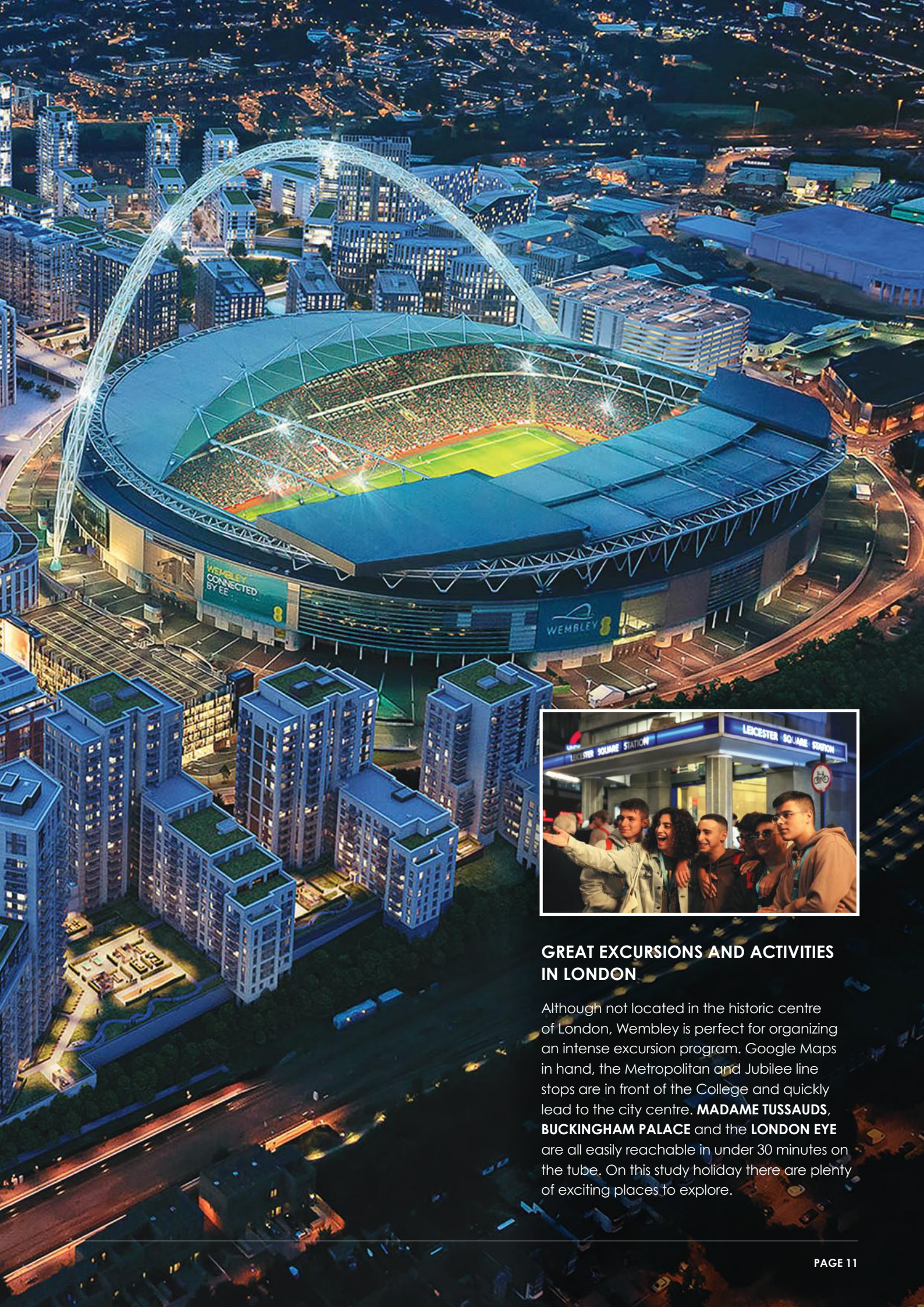
- 🕒 Age: 14-19 years old
- 👤 Class size: maximum 18 students
- 🛏 Room Type: Single-person en-suite
- 🔑 Homestay available
- 🍽 Board Type: Full Board on-site
- 📖 Hours per week: 15 hours tuition
- 🔗 Three packages available
- 📊 CEFR levels: A1 – C1
- 🎓 LanguageCert Exam option available on-site
- 🛡 Location has 24 hour security
- 🚶 6 minute walk between the campus facilities
- ⊕ Extra courses are available to add-on, including:
 - IELTS or Cambridge Preparation Classes
 - Intensive English language Classes (plus others on request)

2023 START DATES

Turn 1: July 4th to July 18th

Turn 2: July 18th to August 1st

Turn 3: August 1st to August 15th



WEMBLEY
CONNECTED
BY EE

WEMBLEY



GREAT EXCURSIONS AND ACTIVITIES IN LONDON

Although not located in the historic centre of London, Wembley is perfect for organizing an intense excursion program. Google Maps in hand, the Metropolitan and Jubilee line stops are in front of the College and quickly lead to the city centre. **MADAME TUSSAUDS**, **BUCKINGHAM PALACE** and the **LONDON EYE** are all easily reachable in under 30 minutes on the tube. On this study holiday there are plenty of exciting places to explore.



STUDY AT THE COLLEGE OF NORTH WEST LONDON

London Wembley Park Drive Middlesex, HA9 8HP, UK

Located on Olympic Way overlooking the stadium, the College of North West London has a long tradition of teaching technical and mathematical disciplines, and is a renowned college in the north of the city. It offers spacious and bright classrooms, large equipped common areas, a Starbucks coffee shop, and a university canteen, where lunches and dinners will take place.

All language courses are taught by our TEFL qualified teachers, specifically designed for the short times of the summer school and integrated with excursions and activities, bringing language learning into real life situations.



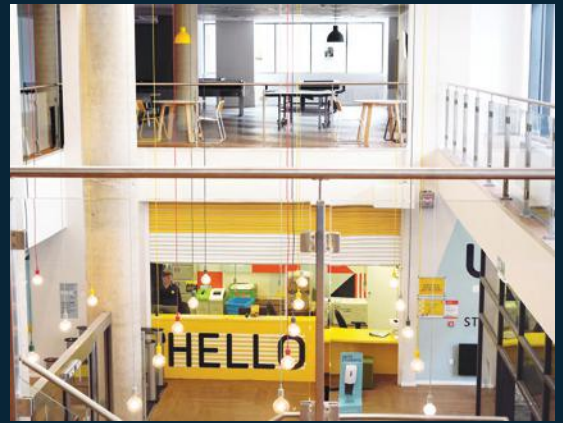
HOMESTAY
AVAILABLE



STUDENT RATING: 5 STARS

LOVE
WHERE
YOU
RENT.

FAS
introduction



UNITE STUDENTS OLYMPIC WAY

23 Olympic Way, HA9 0FR, UK

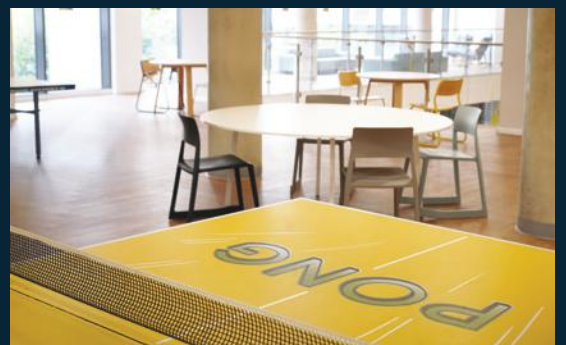
6 minutes' walk from the College of Northwest London

Facing the Wembley stadium Olympic Way, this residence comes with plenty of space to focus and relax. There are multiple areas for quiet study, plus a huge TV area with sofas and comfy chairs. The outdoor terrace on one of the upper floors is the perfect place to watch the sunset on the London skyline, and the snooker and ping pong tables are always available to use.

Residences include:

- Single ensuite rooms with private bathroom
- Wardrobe and desk
- Bed linen
- Towels provided upon request
- Weekly cleaning of rooms and common areas
- On-site laundry facilities
- Wi-Fi included

Rooms are housed in apartments organised around elegant, shared kitchens, and living room where a self-catered breakfast is provided. The building also has a laundry room, a terrace and a large common room with TV, pool and table tennis



3 PACKAGES AVAILABLE

Pick a plan that fits your needs. We have 3 packages available **Basic, Explorer and Deluxe.**

SAMPLE TIMETABLE WEEK 1

HD = Half Day | LBN = London By Night | FD = Full Day

		BASIC	EXPLORER	DELUXE
SUN	14.30 - 18.10	Arrival	Arrival	Arrival
	18.45	Dinner	Dinner	Dinner
	20.30	Room allocation	Room allocation	Room allocation
MON	9.00 - 12.40	Placement test and class	Placement test and class	Placement test and class
	13.00	Lunch	Lunch	Lunch
	14.30 - 18.10	English Language Course Induction	English Language Course Induction	English Language Course Induction
	18.45	Dinner	Dinner	Dinner
	20.30	Welcome party	Welcome party	Welcome party
TUE	9.00 - 12.40	Class CEFR level A1-C1	Class CEFR level A1-C1	Class CEFR level A1-C1
	13.00	Lunch	Lunch	Lunch
	14.30 - 18.10	Free Time	HD Brick Lane Street Art Tour	HD Harrods and Knightsbridge
	18.45	Dinner	Dinner	Dinner
	20.30	Free Time	Free Time	Free Time
WED	9.00 - 12.40	Class CEFR level A1-C1	Class CEFR level A1-C1	Class CEFR level A1-C1
	13.00	Lunch	Lunch	Lunch
	14.30 - 18.10	HD British Museum	Free Time	HD Hard Rock Café
	18.45	Dinner	Dinner	Dinner
	20.30	Free Time	Free Time	Free Time
THU	9.00 - 12.40	Class CEFR level A1-C1	Class CEFR level A1-C1	Class CEFR level A1-C1
	13.00	Lunch	Lunch	Lunch
	14.30 - 18.10	Free Time	HD British Museum	HD Brick Lane Street Art Tour
	18.45	Dinner	Dinner	Dinner
	20.30	Free Time	Night Social Activity: Treasure Hunt	Night Social Activity: Movie Night
FRI	9.00 - 12.40	Class CEFR level A1-C1	Class CEFR level A1-C1	Class CEFR level A1-C1
	13.00	Lunch	Lunch	Lunch
	14.30 - 18.10	Free Time	Free Time	HD British Museum
	18.45	Dinner	Dinner	Dinner
	20.30	Free Time	Free Time	LBN London Sightseeing By Night
SAT	9.00 - 12.40	Free Time	FD London City Centre Tour	FD London City Centre Tour
	13.00	Packed lunch	Packed lunch	Packed lunch
	14.30 - 18.10	Free Time	National Gallery + Covent Garden	National Gallery + Covent Garden
	18.45	Dinner	Dinner	Dinner
	20.30	Free Time	Free Time	Free Time